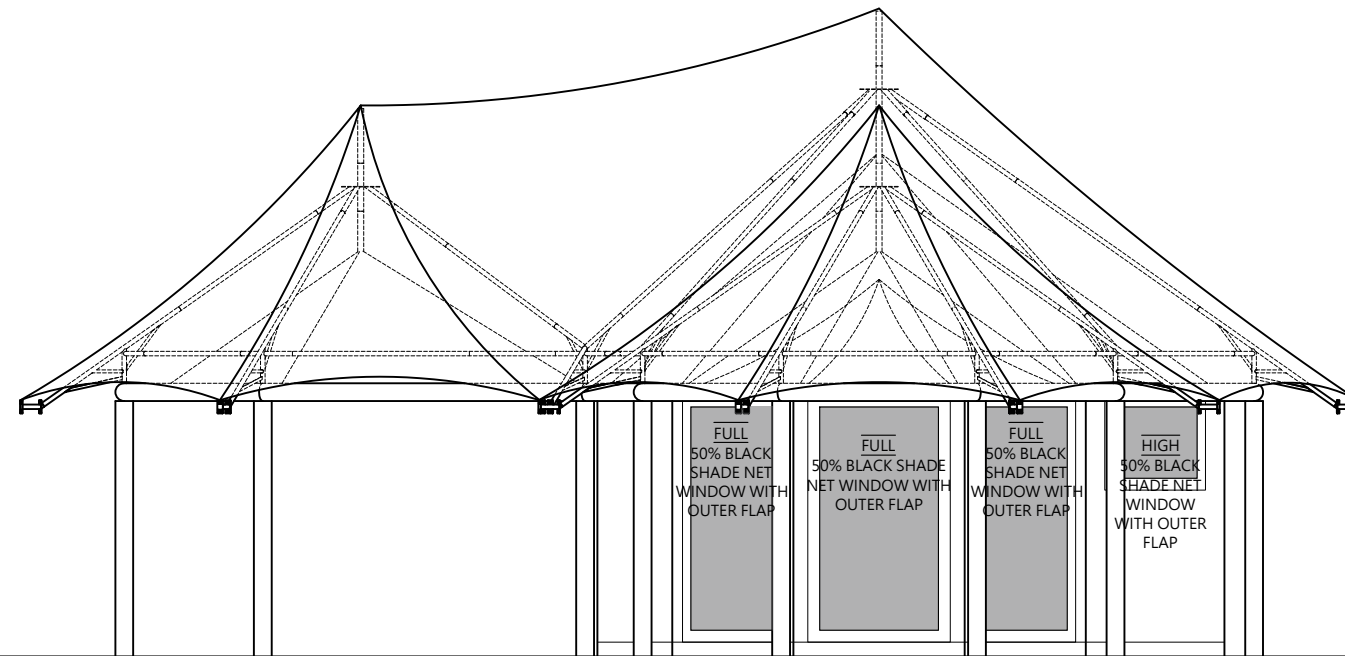


SIDE ELEVATION



SIDE ELEVATION



DESIGNED TO IMPRESS. BUILT TO LAST.

TEL: 036 634 1902
PO BOX 556
LADYSMITH
3370

EMAIL: INFO@CANVASANDTENT.NET
WEBSITE:
WWW.CANVASANDTENT.CO.ZA



WE'VE GOT YOU COVERED

DRAWING INFO:

- DO NOT SCALE DRAWINGS
- ONLY USE MEASUREMENTS GIVEN
- ANY ADDITIONAL INFO OR VARIATION SHOULD BE GIVEN THROUGH TO THE DESIGN OFFICE TO ENSURE AMENDMENTS ARE MADE
- ALL MEASUREMENTS ARE NOMINAL

CLIENT/ PRODUCT
GEORGE MOHLAKOANA SHAKA ON FISH EAGLE FRAME

DRAWING
SIDE ELEVATIONS

SCALE

TO FIT VIEW

DATE

06/02/2023

DRAWING NUMBER

1102-01-02-02-03

CLIENT PROJECT UNIT REV PAGE

DRAWN BY

YADEV

CHECKED BY

-

NOTES:

1. 38mm MILD STEEL POWDER COATED FRAME ON CLIENTS RINGBEAM/GUMPOLE STRUCTURE
2. SHADE NET FLYSHEET
3. PVC FLYSHEET
4. CANVAS BODY
5. 50% BLACK SHADE NET WINDOWS WITH OUTER FLAP
6. AIR VENTS ON BODY WITH INNER FLAP
7. INNER CEILING WITH STANDARD BORDER
8. NO CURTAINS
9. CURTAIN RODS AND LOOPS ONLY
10. C&T TO SUPPLY DOUBLE DOORS AS PER SCHEDULE
11. 2 X DOOR FITTINGS
12. 4 X FAN/LIGHT FITTINGS
13. SQUARE TUBING, WEBBING STRAPS, BODY POLES
- 14.

COLOUR NOTES:

1. MUDFLANCE -
2. BODY/WALLS/ROOF -
3. INNER CEILING - BULL DENIM
4. WINDOWS - 50% BLACK SHADE NET
5. PVC FLYSHEET -
6. SHADE NET FLYSHEET -
7. FRAME -